

# KYDZ Cube 2 User Manual

## 1. Product Introduction

KYDZ Cube 2 is a new-generation intelligent device that integrates automotive key generation, identification, cloning, and multiple diagnostic functions.

## 2. Unboxing Inspection

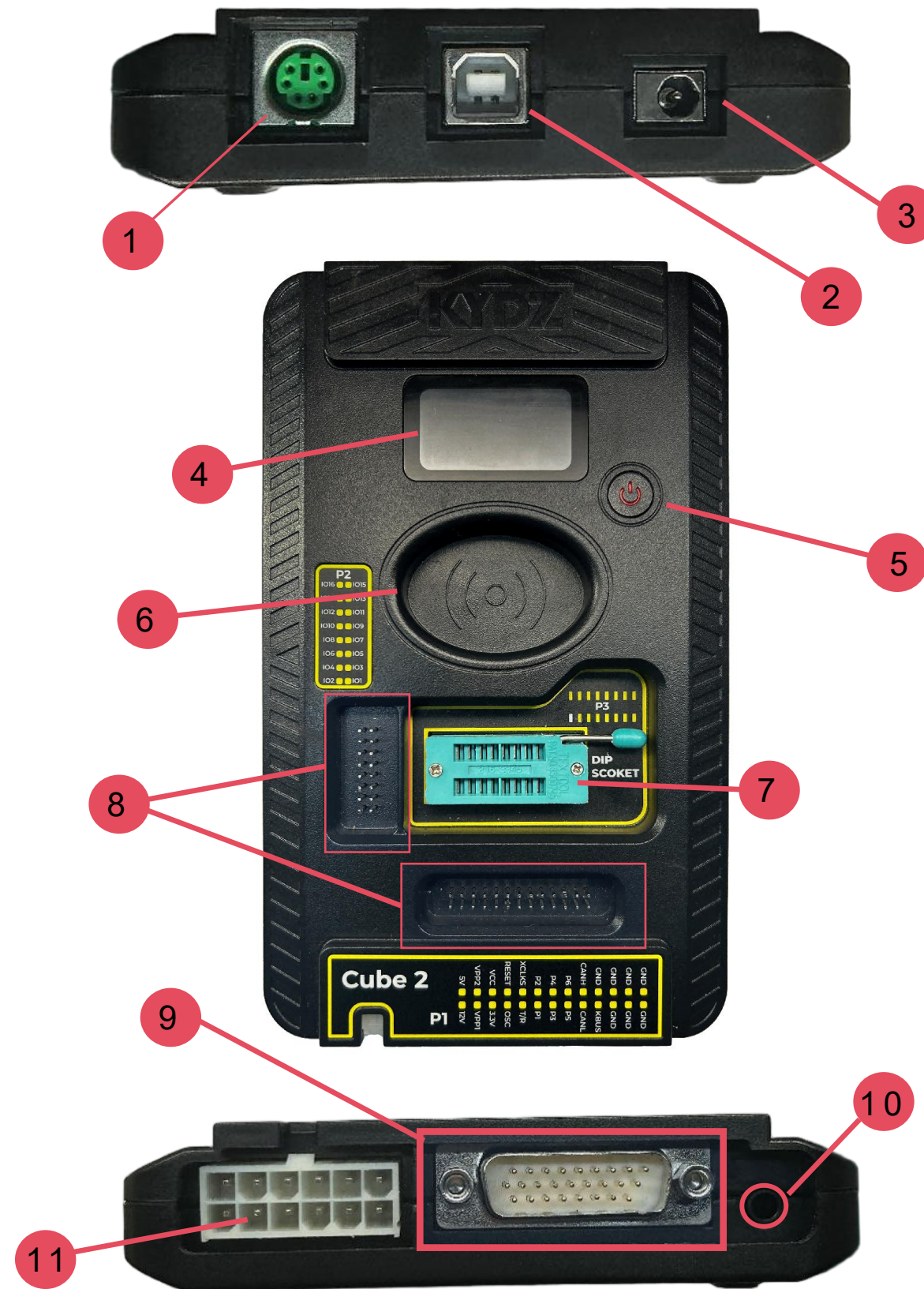
Before use, please confirm that the package contains the following items:

- 1 × KYDZ Cube 2 Main Unit
- 1 × Adapter Board
- 1 × PS2 to 6-Pin Connection Cable
- 1 × Current Detection Cable
- 1 × Data Acquisition Cable

### Cube 2 Packing List



## 3. Product Overview



## 3. Main Unit Introduction

- **1- PS2 Interface:** Used for programming wired sub-machines or other extended functions.
- **2- USB-B Port DC 5V Charging Port:** USB communication port, also for charging the main unit.
- **3- DC2.0 Port DC 12V Charging Port:** Used for DC power supply to the main unit.
- **4- Display:** 1.47-inch HD color screen, displaying device status and function information.
- **5- Power/Function Button:** Used for power on/off and function switching of the device.
- **6- Chip Sensing Area:** Used for identifying and copying key chips.
- **7- Programmer Interface:** Used for reading and writing DIP packaged chips.
- **8- Expansion Interface:** Used for function expansion.
- **9- DB26 Interface:** Function expansion interface and OBD interface.
- **10- External Antenna Interface:** Can connect an external antenna to replace the built-in antenna.
- **11- Motorcycle Matching Interface:** Dedicated interface for motorcycle key learning.

### 3.2 Basic Functions:

- **Key Generation Service:** Quickly generate sub-machine chips and remote controls for various vehicle models.
- **All-in-One Chip Processing:** Accurately identify, read and copy various mainstream chips, including 46, 4D, 4C, 48 and other mainstream and complex chip types.
- **Immobilizer Type/PKE Antenna Detection:** Quickly identify immobilizer type and detect PKE (Passive Keyless Entry) antenna signals without a key.
- **Frequency Measurement:** Fast and long-distance detection of remote control frequencies, supporting 2.4G Bluetooth keys.
- **Key Current Detection:** Built-in key current detection function to quickly troubleshoot abnormal power consumption of remote controls.
- **Portable Offline Operation:** Built-in lithium battery supports independent offline operation.

### 4.Quick Start Guide

#### 4.1 Power On and Off

- **Power On:** Press the button briefly to turn on.

**Enter Function:** After power on, the screen will display the current function (e.g., "Chip Identification") and the "Click to Enter" prompt. Click the button to start using the function.

**Switch Functions:** Press and hold the button for 2 seconds, and after hearing the buzzer response, you can cycle through the following functions.

- **Power Off:** In the power-on state, press and hold the [Power Button] until the screen turns off.

#### 4.2 Connect to Mobile APP

To experience all functions, you need to connect the device to the KYDZ mobile APP.

- **Download and Installation:** Search for "KYDZ" in the mobile app store or scan the QR code on the packaging box to download and install the official APP.
- **Registration and Login:** Open the APP and click the "My" icon in the upper right corner. New users need to complete registration first; existing users can log in directly.
- **Bluetooth Connection:** Ensure that the mobile phone's Bluetooth is turned on. The Cube 2 will automatically connect to the software Bluetooth after powering on.

- **Bind Device:**

After logging in, select "My Devices" on the "My" page.

Click "Add Device", scan the QR code on the back of the main unit or automatically identify the Bluetooth connected device to complete the binding successfully.

---

### 5.Detailed Function Instructions

Cube 2 is divided into two parts: "Offline Functions" and "APP Online Functions".

#### 5.1 Hardware Independent Functions (Offline Use)

No need to connect to a mobile phone, can be used directly after power on.

- **Enter Function:** After powering on, the screen will display the current function (such as "Chip Recognition") and the "Click to Enter" prompt. Click the button to start using the function.
- **Switch Function:** Press and hold the button for 2 seconds, and after hearing the buzzer response, you can cycle through the following functions:



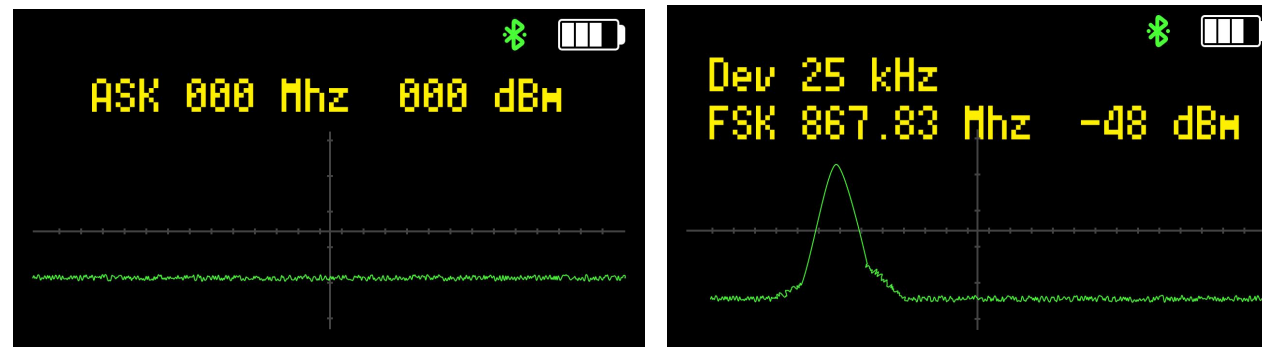
- **Chip Identification and Cloning:**

Place the key in the induction area and click to identify the chip type and data. Offline mode only supports identification, not cloning.



- **Key Frequency Measurement:**

Mainly used to monitor automotive key signals in various frequency bands. The screen display and buzzer clearly indicate whether the high-frequency signal of the car key is normal. Supported frequency ranges: 305-320MHz; 430-436MHz; 868MHz; 902MHz; 2.4G Bluetooth frequency.



- **Bluetooth Signal Detection:**

Used to detect specific Bluetooth signals. When Bluetooth detection is started, the connection with the mobile phone will be automatically disconnected. After the Bluetooth test is completed, you need to manually reconnect to the mobile phone.



- **Immobilizer Coil Detection:**

Used to detect immobilizer types and find the position of the smart antenna.

Bring the acquisition head close to the immobilizer coil and turn on the

ignition to determine what immobilizer chip the original car uses.

Press the one-button start button multiple times to find the antenna position according to the displayed signal strength.

The headphone jack can be connected to an external acquisition antenna to reach narrow areas.



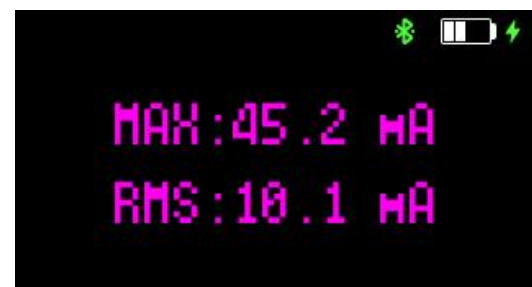
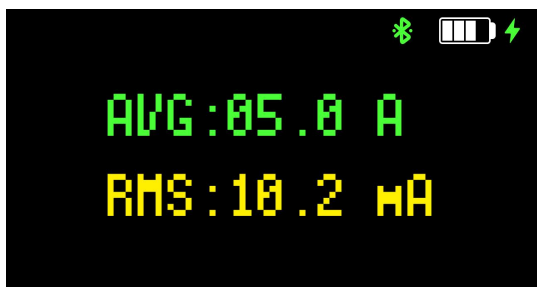
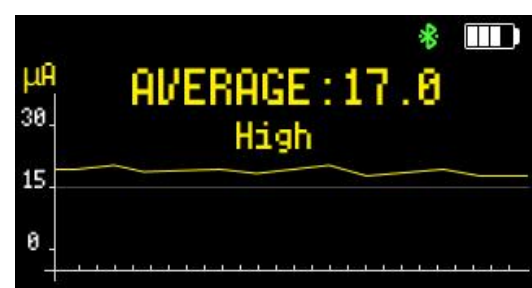
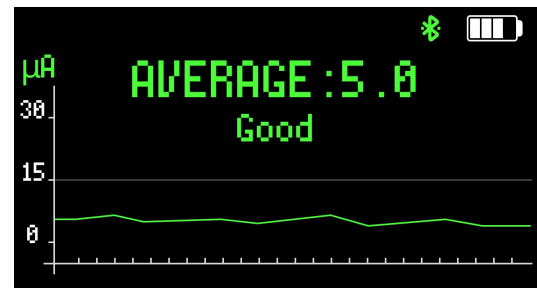
- **Current Mode:**

Used with the current detection cable to diagnose current problems of the remote control.

It can detect two results: the static power consumption of the motherboard and the working current of the motherboard.

Judge the leakage of the motherboard based on these two values: green for normal static power consumption, yellow for slightly high, red for excessively high.

The working current is generally between 8-25mA; excessive values require attention.

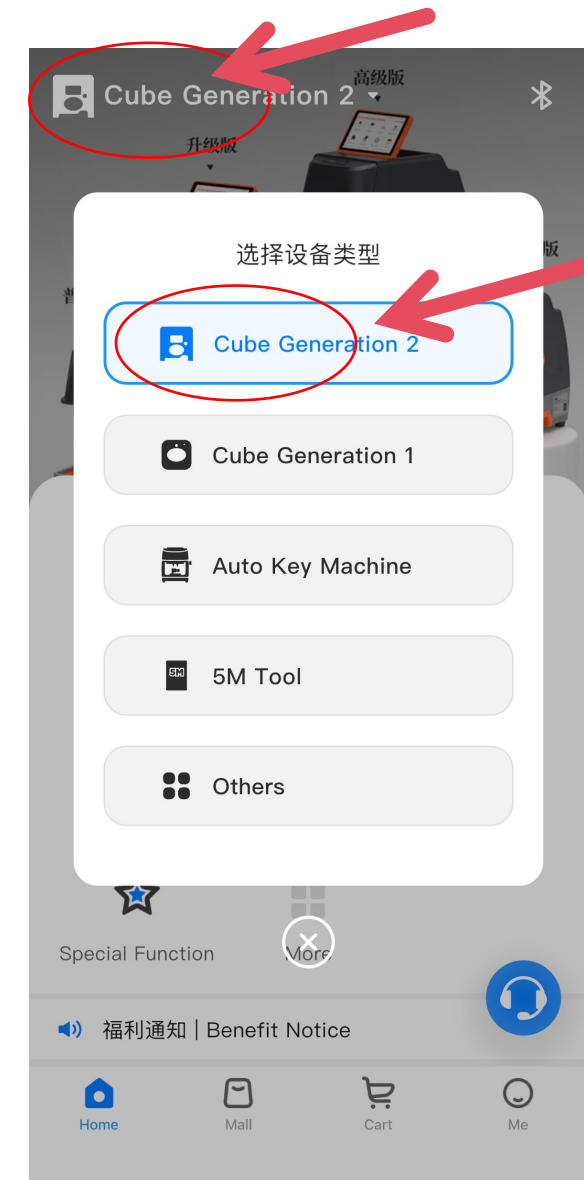


## 5.2 APP Software Functions (Online Use)

After connecting to the APP, you can unlock more powerful functions (some functions require paid activation).

- **Select Device Type:**

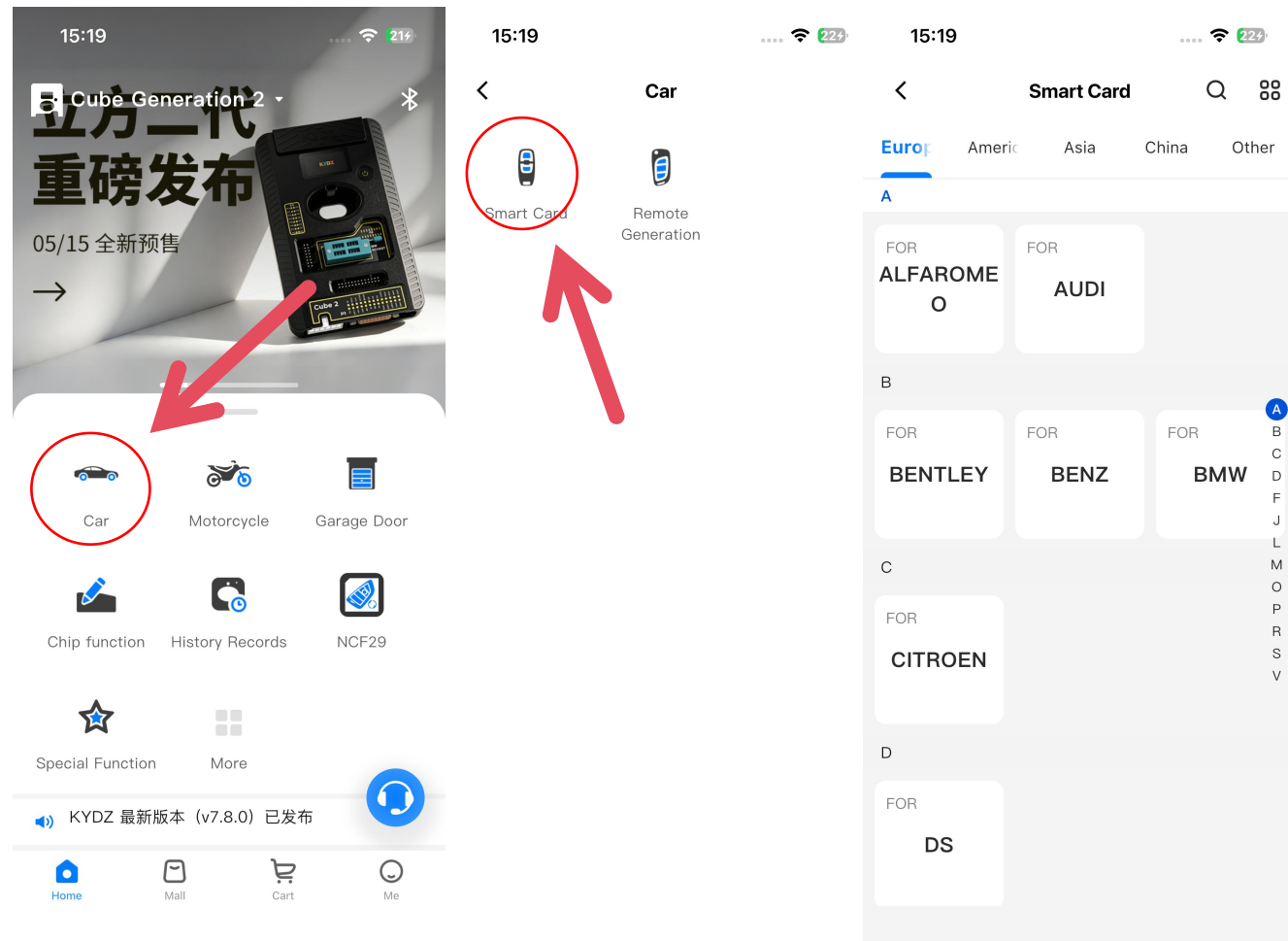
Click "Select Device Type" in the upper left corner of the APP main interface and select [Cube 2]. The APP will switch to the exclusive function interface for Cube 2.



**Use Various Software Functions: Operate according to the menu on the APP:**

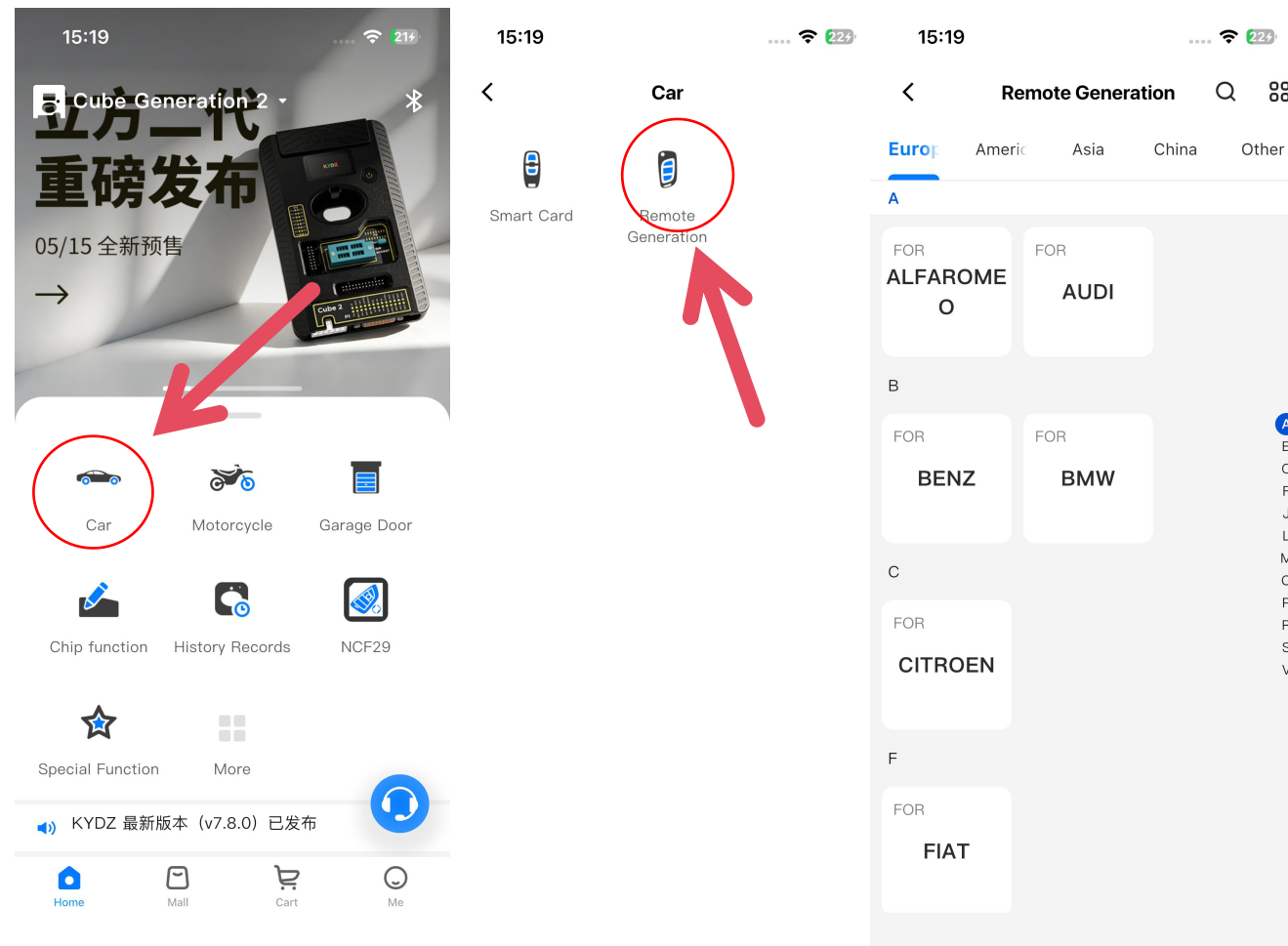
- **Automotive Smart Card Function:**

Click the "Automotive" module on the homepage, then click "Smart Card", select the corresponding car brand and model, and follow the on-screen prompts to operate.



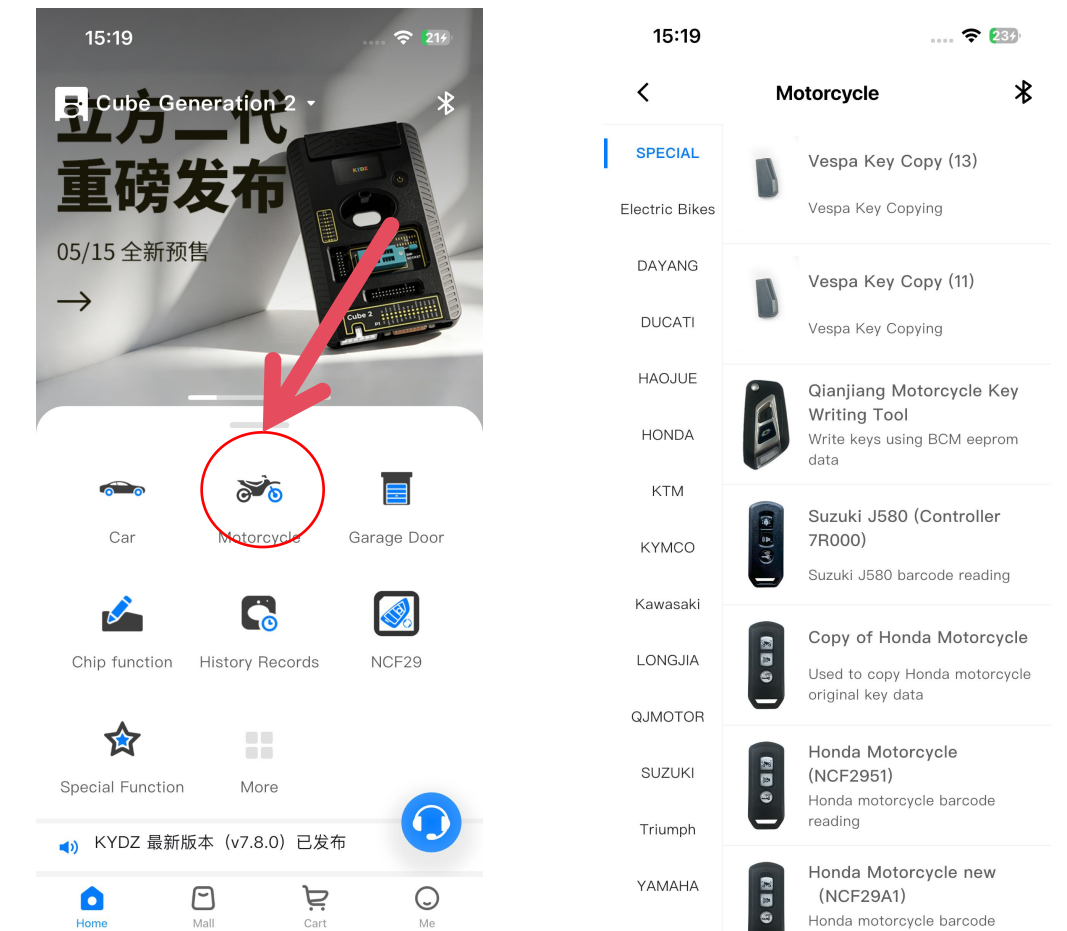
- **Automotive Remote Generation Function:**

Click the "Automotive" module on the homepage, then click "Remote Generation", select the corresponding car brand and model, and follow the on-screen prompts to operate.



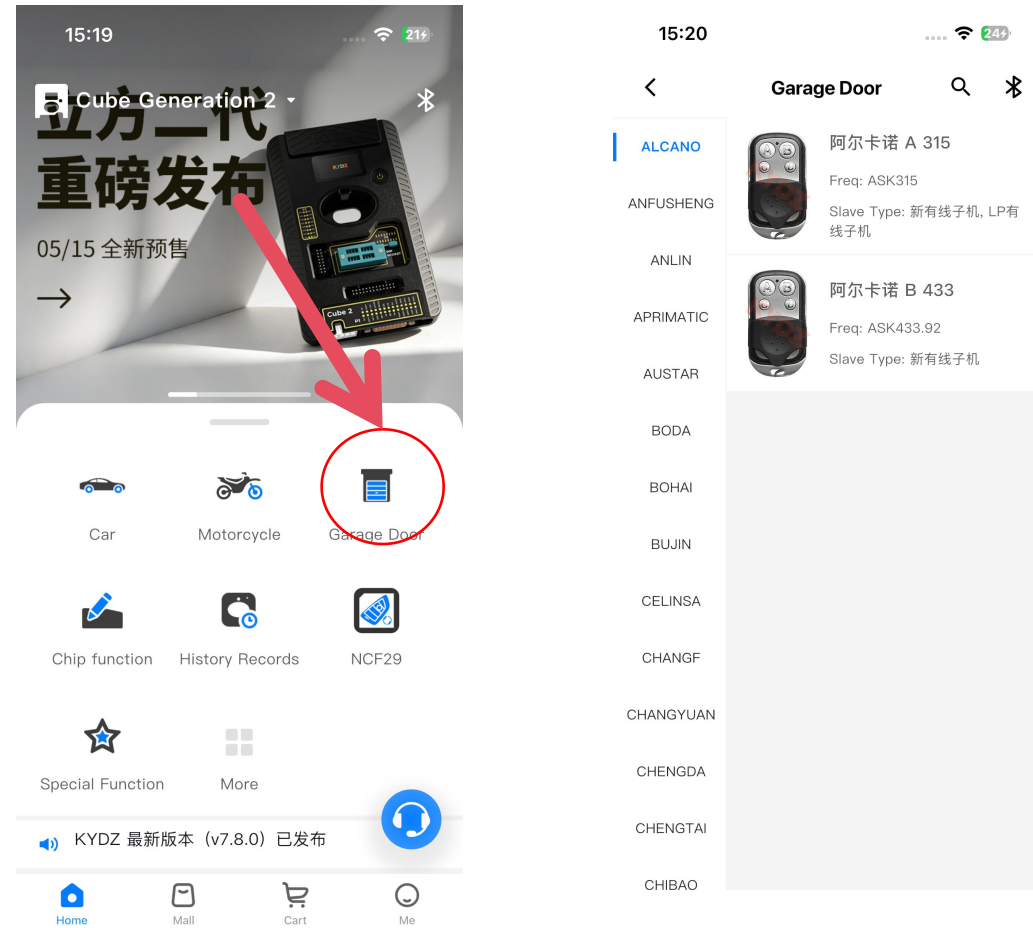
**Motorcycle Function:**

Click the "Motorcycle" module option on the homepage, select the corresponding motorcycle brand and model and the function to be implemented, and follow the page prompts to operate.



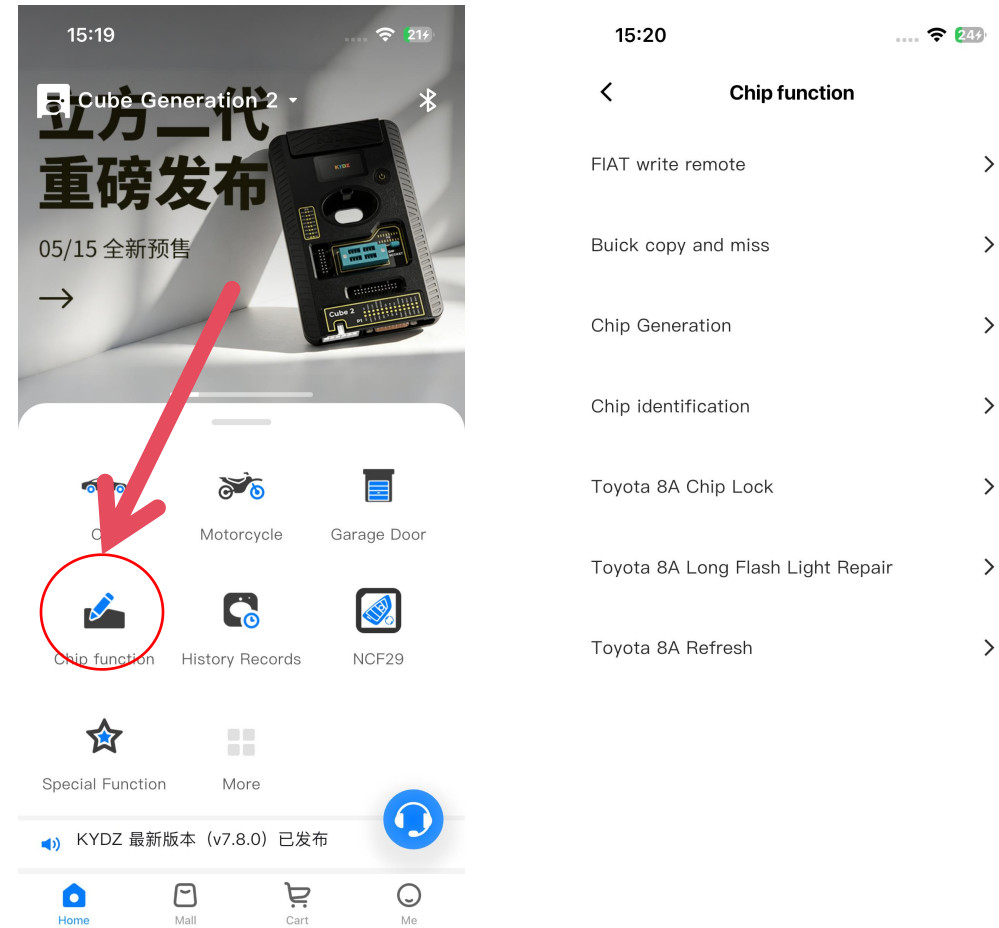
- **Garage Door Function:**

Click the "Garage Door" module option on the homepage, select the corresponding brand and model, and follow the page prompts to operate.



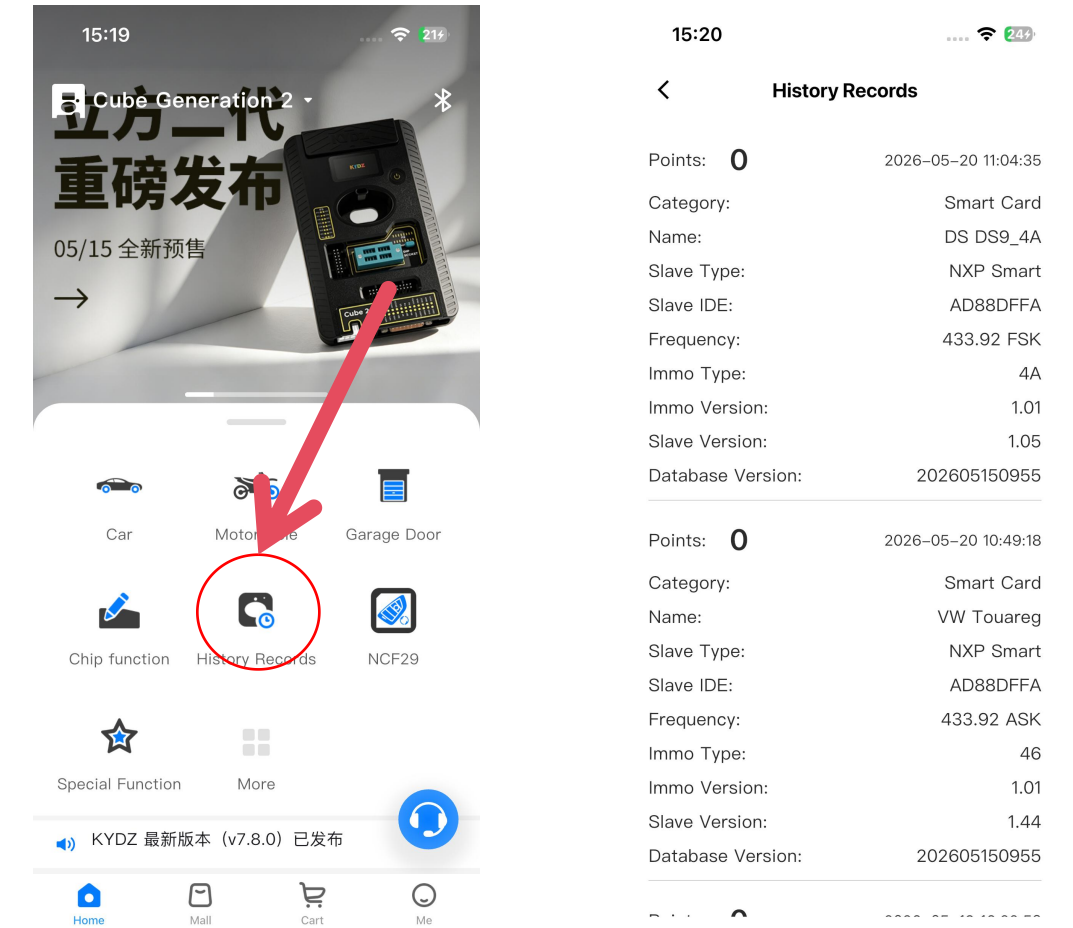
- **Chip Function:**

Click the "Chip Function" module option on the homepage, select any chip function according to your needs, and follow the page prompts to operate.



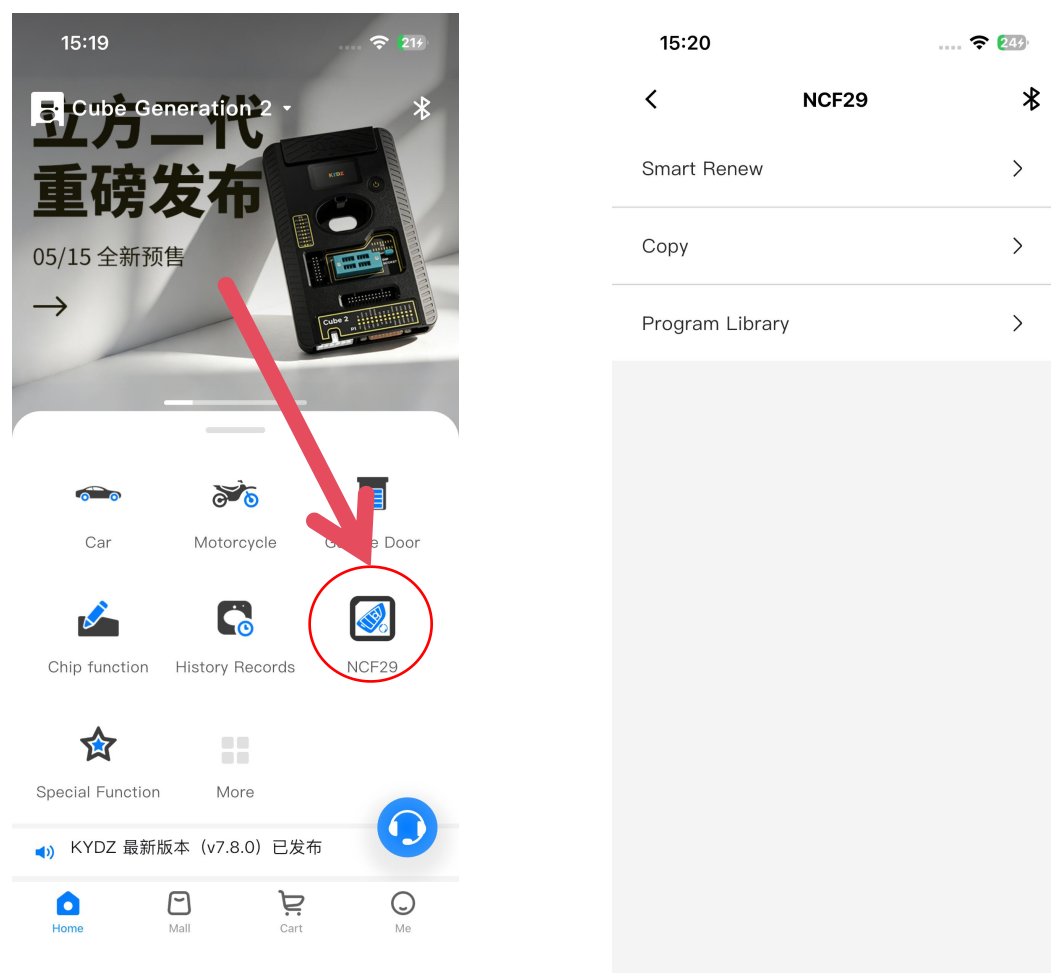
- **History Record Function:**

Click the "History Record" module option on the homepage to view device usage, data information and points.



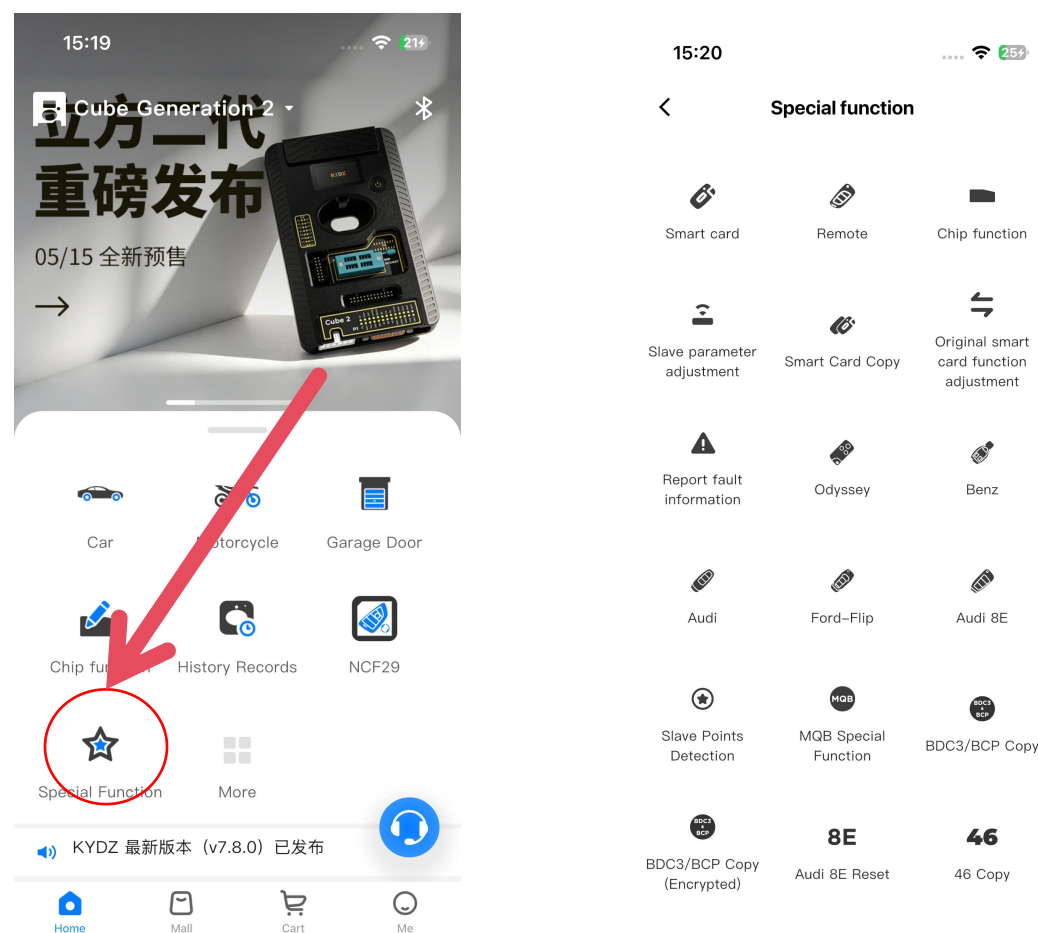
- **NCF29 Function:**

Click the "NCF29" module option on the homepage, then select Smart Renew function, Copy function or Program Library function, and follow the page prompts to operate.



- **Special Functions:**

Click the "Special Functions" module option on the homepage to view and use other functions except those on the homepage. Click the required function and follow the page prompts to operate.



## 6 Firmware Upgrade and Maintenance

- **Online Upgrade:**

This device supports official online firmware upgrade. You need to bind the matching official APP and keep the network normal, and complete version detection and automatic upgrade according to the APP instructions. Do not disconnect the connection, cut off the power or exit halfway during the upgrade to avoid firmware damage.

- **Power Supply and Charging:**

The device supports two standard power supply/charging input methods:

- USB-B Port: DC 5V power input
- DC2.0 Port: DC 12V power input



## 7 Device Specifications

<b>Display:</b>	1.47-inch Color Screen (172×320)	<b>Battery Capacity:</b>	1000mAh/3.7V
<b>Device Dimensions:</b>	170mm * 100mm * 23mm	<b>Device Weight:</b>	224g

## Disclaimer

- This product is only for professional personnel to use in legal and compliant formal business scenarios such as automotive repair, fault diagnosis and routine inspection. Unauthorized use for vehicle anti-theft cracking, illegal modification, tampering with vehicle data and any other purposes violating laws and regulations is strictly prohibited.
  - The user shall bear all responsibilities for equipment damage, vehicle failure, property loss and all legal liabilities caused by illegal operation, non-professional private modification, use beyond working conditions, evasion of normal device permissions or use for illegal activities. The enterprise shall not bear any joint or compensation liability.
  - This device is a precision electronic testing instrument. Keep the body dry and ventilated during use and storage. It is strictly prohibited to immerse in water, splash, or place in harsh environments such as high humidity, dust and corrosive gases, otherwise it may easily cause circuit short circuit, component aging and permanent damage.
  - The rated operating and storage ambient temperature of the device is "-10°C~50°C". It is strictly prohibited to operate and store in environments with ultra-high temperature, ultra-low temperature, direct sunlight or direct heat source baking. Equipment failures caused by use beyond the rated temperature range are not covered by the warranty.
  - The device contains precision chips, circuits and sensing components inside. Unauthorized disassembly, modification, flashing and non-official maintenance are strictly prohibited.
- Unauthorized disassembly and modification will directly terminate the warranty rights, and the user shall be responsible for any failures, safety hazards and equipment damage caused thereby.
  - During transportation, installation and use, it is strictly prohibited to drop, heavy pressure, squeeze or violently impact the device to avoid hidden failures such as motherboard desoldering, component displacement and interface damage caused by external force.
  - This operation manual only corresponds to the current released version. The software reserves the right to adjust functions and upgrade versions at any time. In case of any content discrepancy, the actual interface and functions of the latest software version shall prevail.
  - Equipment operation must strictly follow the official manual and standard operating procedures, and non-professional personnel are prohibited from performing unauthorized advanced function settings and data reading/writing operations; the user shall bear full responsibility for any vehicle electronic control system abnormalities or data loss caused by misoperation.
  - If you encounter device abnormalities, functional failures or technical consultation needs during use, please be sure to contact the official authorized dealer or official customer service for formal technical support. Do not hand over the device to non-professional third parties for maintenance.